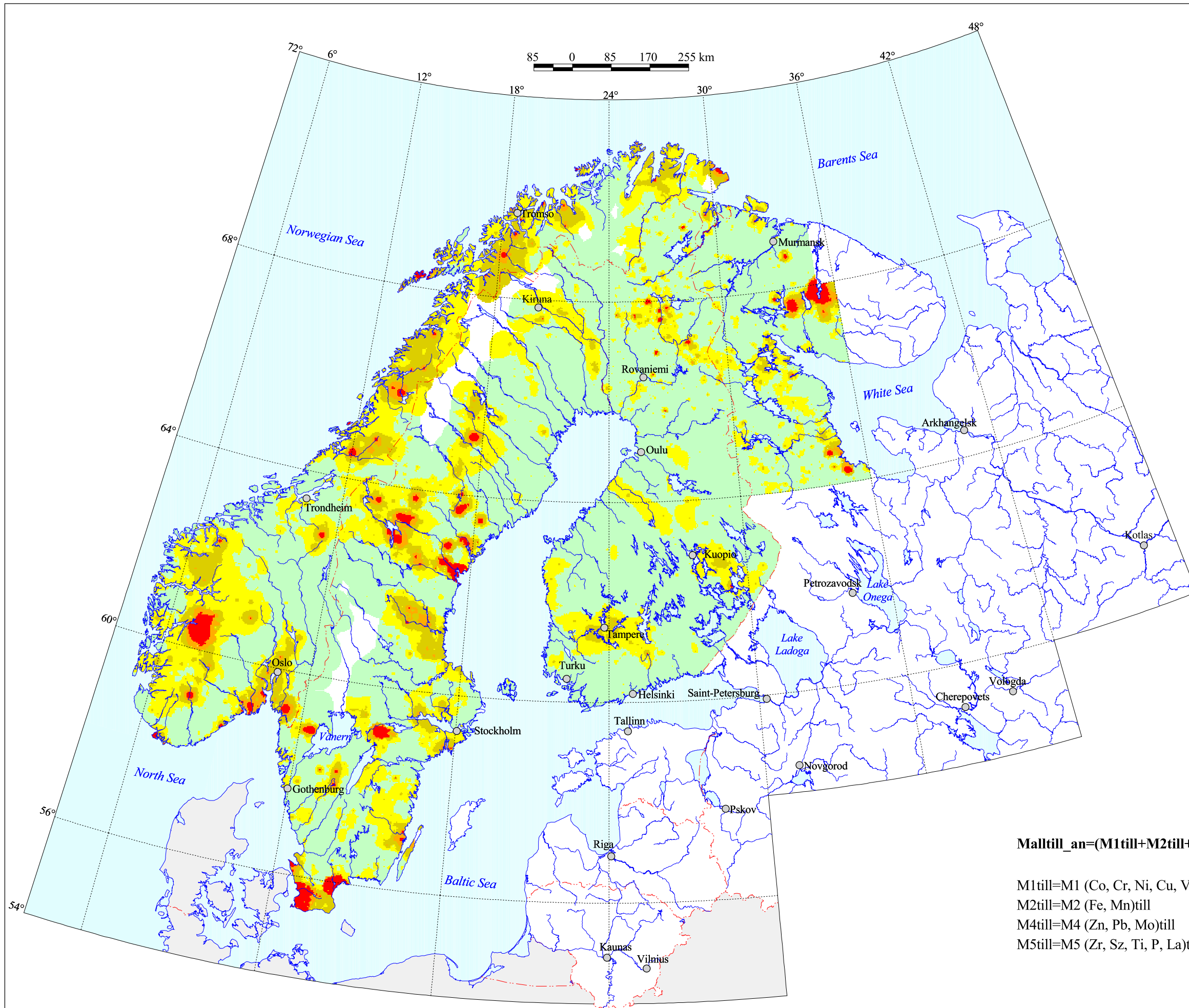


Malltill_an



- Background
- 1st anomalous level
- 2nd anomalous level
- 3rd anomalous level
- 4th anomalous level
- no data

$Malltill_an = (M1till + M2till + M4till + M5till)$, where:

- M1till=M1 (Co, Cr, Ni, Cu, V)till
- M2till=M2 (Fe, Mn)till
- M4till=M4 (Zn, Pb, Mo)till
- M5till=M5 (Zr, Sz, Ti, P, La)till

Integrated Anomalous Geochemical Fields, Malltill_an